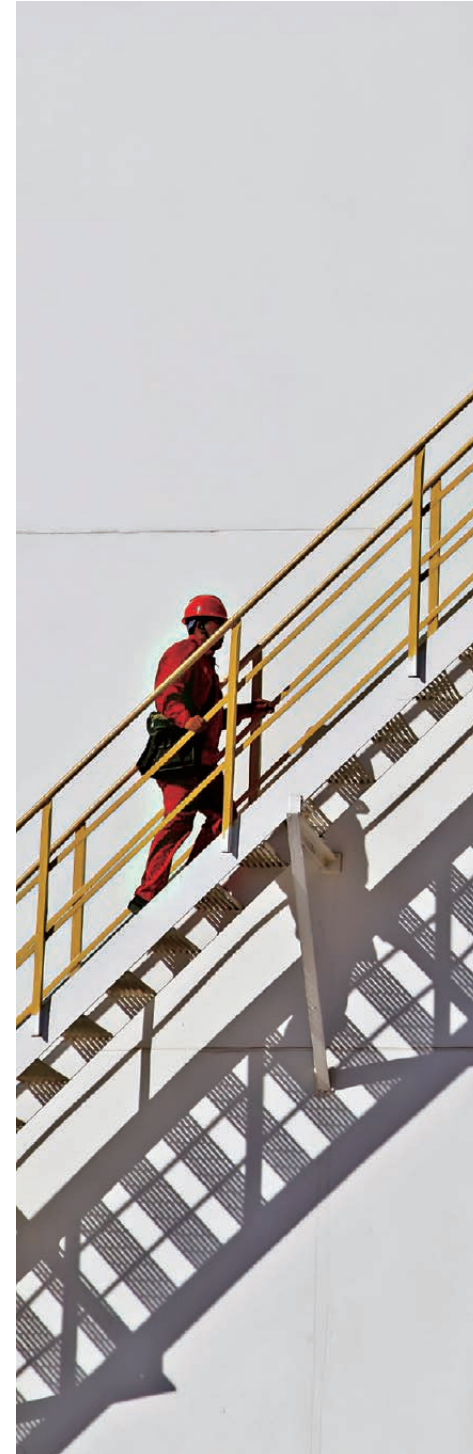


Operation Highlights

	2020	2021	2022
Financial Index			
Revenue (billion RMB yuan)	2,087.1	2,807.3	3,400.0
Earnings before taxes (billion RMB yuan)	87.5	166.5	266.9
Net income (billion RMB yuan)	50.3	100.3	180.4
Taxes and fees paid globally (billion RMB yuan)	315.8	398.0	530.5
Oil and Gas Production			
Oil production (mmt)	178.64	179.44	182.04
Domestic	102.25	103.11	105.00
Overseas (Equity)	76.39	76.33	77.04
Gas production (bcm)	160.35	169.24	177.20
Domestic	130.60	137.79	145.45
Overseas (Equity)	29.75	31.45	31.75
Refining and Chemicals			
Crude refining capacity (mmt)	231.68	231.68	251.68
Domestic	204.30	204.30	224.30
Overseas ¹	27.38	27.38	27.38
Crude runs (mmt)	191.83	200.81	203.46
Domestic	160.02	166.74	164.90
Overseas ²	31.81	34.07	38.56
Domestic refined products output (mmt)	107.23	108.92	105.74
Domestic lube oil output (mmt)	1.58	1.89	1.68
Domestic ethylene output (mmt)	6.35	6.71	7.42
Marketing and Sales			
Refined products sales (mmt)	186.96	184.48	172.71
Domestic	106.51	111.26	104.23
Overseas	80.45	73.23	68.48
Domestic service stations	22,612	22,684	22,655
Domestic natural gas sales (bcm)	184.66	205.55	217.81



[1-2] The overseas crude refining capacity is based on CNPC's share, but the amount of overseas crude runs is based on the total output.